

Key functions, LED signals.....	10
PTT mode .....	10
Service settings .....	11
Volume control .....	11
External connections for headset, audio player, audio recorder .....	11
Installation instructions .....	4/5
Installation intercom .....	6/7
Installation intercom with footswitch.....	8/9
Installation microphone .....	7/9
Installation loudspeaker .....	7/9

## Features

- Open duplex
- Push-to-talk
- Headset interface
- Speech key control via footswitch
- Music input
- Recording possibility
- AEC (Automatic echo cancellation)
- NR (Noise reduction)
- NG (Noise gate)
- Individual volume control for loudspeaker / microphone/ headset / audio via +/- keys
- Balanced microphone inputs

## Technical Data

Voltage/power.....	15VDC/700mA
Maximum power consumption (limited by power supply) .....	<15W
Power consumption in OFF-mode .....	<0.15W
Maximum output impedance (no continuous operation) at 8Ω/channel .....	5W
Minimum loudspeaker impedance .....	8Ω
Audio IN-input level/input impedance .....	max. 100mV <sup>(1)</sup> /2kΩ
REC OUT-output level/output impedance .....	max.3V <sup>(2)</sup> /2kΩ

<sup>(1)</sup>Connect Audio IN to the headphone jack of the audio source.

Tune output level of the audio source in such a way that in case of maximum volume overmodulation of the intercom system is avoided.

<sup>(2)</sup>This value depends on the volume set, on the speech volume and on the distance to the microphone.



## PUBLIC III CE

## Intercom System Comfort Edition

## Service and Installation Instructions



## Delivery Contents Intercom System



Intercom console  
colour RAL 7035 40.054.801  
40.054.454



Central unit  
colour RAL 9010 40.054.811  
40.054.453



Intercom T-Adapter 40.054.833



Surface mounted loudspeaker 6W / 20Ω  
colour RAL 9010 40.006.173  
cable outlet top/bottom 40.006.174



Omnidirectional microphone EM 158 in ABS housing  
colour RAL 9010 incl. wall/ceiling holder 40.005.094  
and 25m cable with RJ45 plug 40.054.470



Power supply GPP10 Medical, 100-240V ~  
50-60Hz, 2m cable 40.054.800



Primary adapter ROW 08.052.05



Power cable EU, 2m 40.054.834



Power cable USA, 2m 40.054.835



Power cable UK, 2m 40.054.836



Patch cable KAT5e, 30cm 40.054.837



Patch cable KAT5e, 3m (2) 40.054.825



Patch cable KAT5e, 3m (3) 40.054.826



Patch cable KAT5e, 25m 40.054.328



Audio cable, 2m (2x) 11.054.02

## Delivery Contents Footswitch<sup>(3)</sup>



Footswitch STEUTE KF 1S  
with 2m cable and RJ45 plug 40.054.422



Footswitch T-Adapter 40.054.838

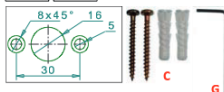


Patch cable KAT5e, 30cm 40.054.839

## Delivery Contents Mounting Material



Service and Installation Instructions German and English 35.054.001  
35.054.002



Mounting material for microphone ceiling fixation:  
drilling template, 2 screws 3,5x35mm, 2 wall plugs  
5x25mm, Allen key 1,5mm. 35.054.003  
40.054.827  
40.054.828



Mounting material for central unit:  
4 screws 3,5x35mm, 4 wall plugs 5x25mm,  
4 screws 3,5x16mm, 2 hook-and-loop fasteners<sup>(4)</sup> 40.054.827  
40.054.829  
40.054.830



Mounting material for loudspeaker:  
4 screws 3,5x35mm, 4 wall plugs 5x25mm, 2 screws  
2,9x16mm, 2 decorative caps, cable ties 100mm. 40.054.827  
40.054.831  
40.054.832



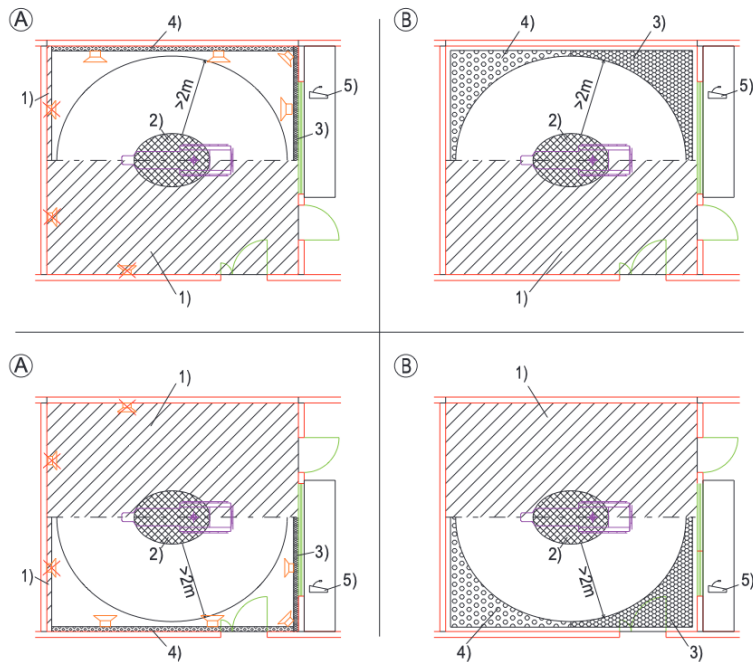
Mounting material for power supply:  
hook-and-loop fastener<sup>(4)</sup>. 40.054.830

<sup>(3)</sup> For AX the footswitch is included in the delivery of the intercom system and should be connected.

For XP the footswitch can be obtained as an optional accessory.

<sup>(4)</sup> Use hook-and-loop fasteners only on suitable surfaces (adhesion)!

## Positioning of the Components Microphone, Loudspeaker and Intercom Console



- Pos. A Wall fixation of the loudspeaker  
 Pos. B Ceiling fixation of the loudspeaker  
 Pos. 1 Prohibited fixation area for the loudspeaker  
 Pos. 2 Wall fixation of the microphone  
 Pos. 3 Privileged fixation area of the loudspeaker  
 Pos. 4 Optional fixation area of the loudspeaker  
 Pos. 5 Intercom console in the control room



### Microphone:

- ceiling fixation
- as close to the user's working position as possible
- avoid collision with other components suspended from the ceiling



### Loudspeaker:

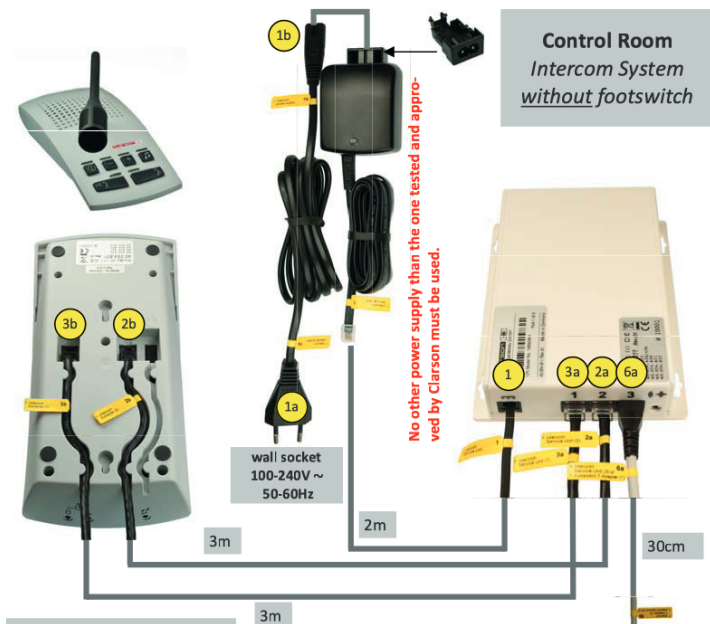
- the loudspeaker must not be installed in the hatched area (pos. 1) to avoid interferences
- preferably the loudspeaker has to be installed on the wall
- installation height  $>2\text{m}$
- avoid loudspeaker radiation towards the control room door
- distance microphone / loudspeaker  $>2\text{m}$   
the greater the distance, the better the transmission quality



### Intercom Console:

- the intercom console has to be placed as far from the control room door as possible

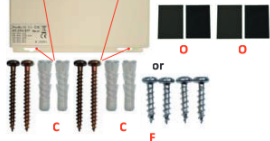
- 1 > Intercom Central Unit  
--- (DC Power)
- 2a > Intercom Central Unit (2)  
< Intercom Console (2)
- 3b > Intercom Console (1)  
< Intercom Central Unit (1)
- 1a > Intercom Cleaner Socket  
< Intercom Power Supply
- 2b > Intercom Console (2)  
< Intercom Central Unit (2)
- 3a > Intercom Central Unit (1)  
< Intercom Console (1)
- 1b > Intercom Power Supply  
< Intercom Cleaner Socket



#### Installation Central Unit

On the wall or under the table

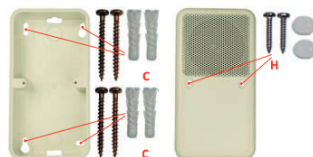
Use hook-and-loop fasteners on/y on suitable surface (adhesion)!



- 6a > Intercom Central Unit (3)  
< Intercom T-Adapter (2)
- 7b > Intercom Speaker  
< Intercom T-Adapter (3)
- 6b > Intercom T-Adapter (2)  
< Intercom Central Unit (3)
- 8 > Intercom T-Adapter (1)
- 7a > Intercom T-Adapter (3)  
< Intercom Speaker



#### Installation Loudspeaker



**Important for Installation Planning:**

Dimensions microphone cable :  
Ø 2,6mm  
Length 25m  
Clearance hole for RJ45 plug at least Ø16mm. Observe drilling template!

Dimensions loudspeaker cable:  
Ø 5,8mm  
Length 25m  
Clearance hole for RJ45 plug at least Ø17mm.

Dimensions mounting material  
see page 3

#### Ceiling Installation Microphone

